

**International Master Programme
"SAFETY IN THE FOOD CHAIN"
Studying Abroad**



Ulrike Piringer

ulrike.piringer@boku.ac.at

Center for International Relations (ZIB)

Content

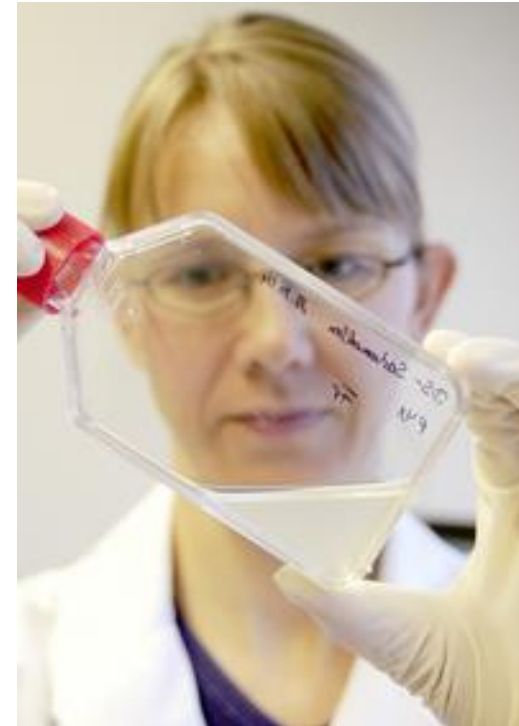
Partner universities

Erasmus+

- General information
- Scholarship
- Application
- Required documents
- Procedure after application
- Application at the host university

Alternatives

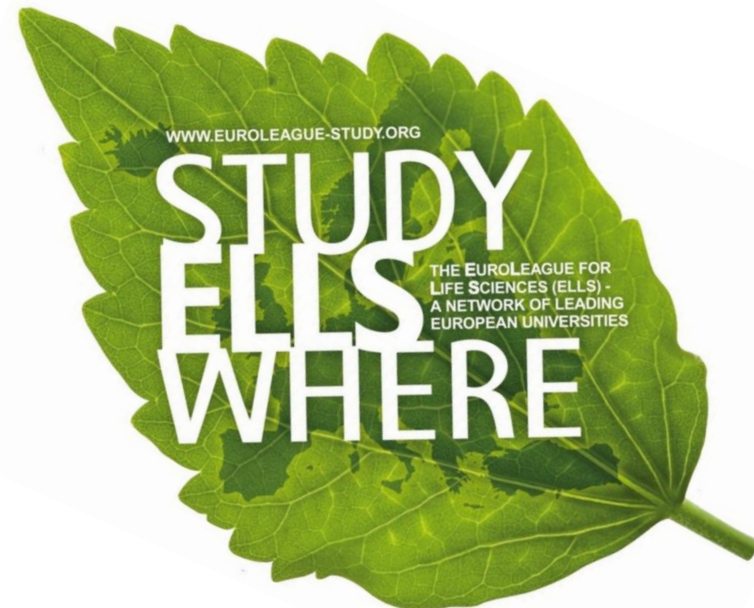
Additional offers to go international



Euroleague for Life Sciences

SIFC has been established as joint programme within the **Euroleague for Life Sciences**, a quality network of European universities collaborating in the fields of life sciences.

www.euroleague-study.org



Partner universities for studying abroad

University of Copenhagen, Faculty of Science (SCIENCE), Denmark



SIFC – Welcome Tutorial, 03.10.2017



**LIMITED PLACES – make
sure to indicate a second
choice when you apply for
Erasmus+**

Partner universities for studying abroad

Wageningen University and Research Centre (WUR), The Netherlands



WAGENINGEN UNIVERSITY
WAGENINGENUR

LIMITED PLACES – make sure to indicate a second choice when you apply for Erasmus+

Non-EU/EEA citizens have to pay an administrative fee for the visa!

Partner universities for studying abroad

University of Hohenheim (UHOH), Germany



UNIVERSITÄT HOHENHEIM



Partner universities for studying abroad

[Czech University of Life Sciences Prague \(CULS\)](#)



Other Partner universities

[University of Ljubljana \(LJU\), Slovenia](#)

[Swedish University of Agricultural Sciences Uppsala \(SLU\), Sweden](#)

[Warsaw University of Life Sciences \(WULS-SGGW\), Poland](#)

ERASMUS+

- **Duration: max. 12 months abroad
(October -> September; SS + WS – > 2 applications)**
- **12 months per study cycle (BSc, MSc, PhD)**
- **Information: www.boku.ac.at/int-out-e-en.html**

Scholarship

Only an **additional allowance (not a full grant)**

- Denmark: € 350,-*
- Czech Republic & Germany & Netherlands: € 300,-*

[Euro per month, additionally to „Studienbeihilfe“]

* Amounts for study year 2017/18

Application

Online: Mobility Online

ERASMUS+ / How to Apply

<http://short.boku.ac.at/int-out-e-howtoapply-en.html>

(Use your BOKUonline login)

13th December 2017 – 22nd January 2018

for the upcoming academic year 2018/19

Requirements

- **Transcript of records**
Grade point average below 3.0
- **English language proficiency certificate**
TOEFL, IELTS, Cambridge Certificate, etc.
BOKU language course (min. Engl.II), school leaving certificate, lectures given in Engl.(min. 30 ECTS), ...
- **Motivation letter**
What are you studying? What are your special interests? Why did you choose this host university (connection to your study)? What do you expect from your Erasmus exchange?

Required Steps

- 1. Go to the portal:** Choose your host university
- 2. Give in your data** (e.g. university – 1st, 2nd 3rd choice)
- 3. Receive a registration e-mail** (+ individual login link)
- 4. Upload:**
 1. Passport sized photograph
 2. Transcript of records (signed by Registration Office, including grade point average)
 3. Language certificate
 4. Motivation letter
- 5. Confirm dates = send application**
- 6. Receive e-mail that application has arrived**

Information sessions (in German):

As part of the „International Days“

20.-23. November

Muthgasse: Wed 22nd November, 10.15-11.15, Muthgasse III, SR13

Türkenschanze: Tues 21st November, 16.00-17.00, Schwackhöferhaus,
SR06

Thurs 23rd November, 13:15-14:15, Schwackhöferhaus, SR09

application until January

**nomination
(by March)**

-> information session in March 2018

**nominated students acquire
information on host universities**

deadlines, forms ,

Learning Agreement, etc.

-> application at host university

Further steps:

- Mobility Online

- Students Online

- OLSLanguage Assessment

Info on host universities

- Application form
- Application deadline
- Courses offered
- Learning Agreement
- Schedules/time tables
- Accommodation



ERASMUS+ - Contact

Information:

<http://www.boku.ac.at/int-out-e-en.html>

Lisa Kargl

erasmus@boku.ac.at

Student inquiry:

Mon, Tues, Weds, Thurs, Fri: 10.00 – 12.00

Additionally Wed: 14:00 – 16:00

Exceptions see: <http://www.boku.ac.at/lisakargl.html>



Alternatives

- **ERASMUS Placement** – grant for internship/master's thesis abroad
- **Remission of tuition fees** at home and at host university during study abroad period within SIFC
 - > apply for Erasmus (mark in the application form that you have done ERASMUS before) – ONLY IF YOU DID 12 MONTH ERASMUS IN ANOTHER MASTER PROGRAMME

Additional offers to go international

- **Summer Schools of the Euroleague for Life Sciences:**
<http://www.euroleague-study.org/summer-schools>
(will be updated in November/December)
- **Scientific Student Conference of the Euroleague for Life Sciences:**
<http://www.euroleague-study.org/94123>
 - 2 days at a different ELLS university every November (registration deadline: end of September)
 - Present your BSC- or MSC Thesis (deadline for abstract submission: June)

General administrative questions about SIFC:

Ulrike Piringer

ulrike.piringer@boku.ac.at

student inquiry:

Mo-Fri: 10:00 – 12:00 + Wed 14:00 – 16:00

Exceptions see: <http://www.boku.ac.at/piringerulrike.html>

Information

**Zentrum für Internationale Beziehungen (ZIB)
Center for International Relations**

<http://www.boku.ac.at/international.html>

Peter Jordan-Straße 82a

1190 Wien

Tel.: 047654 32000

international@boku.ac.at



THANK YOU FOR YOUR ATTENTION
Good luck with your studies!

