

**International Master Programme  
"SAFETY IN THE FOOD CHAIN"  
Studying Abroad**



**Ulrike Piringer**

**[ulrike.piringer@boku.ac.at](mailto:ulrike.piringer@boku.ac.at)**

**Center for International Relations (ZIB)**

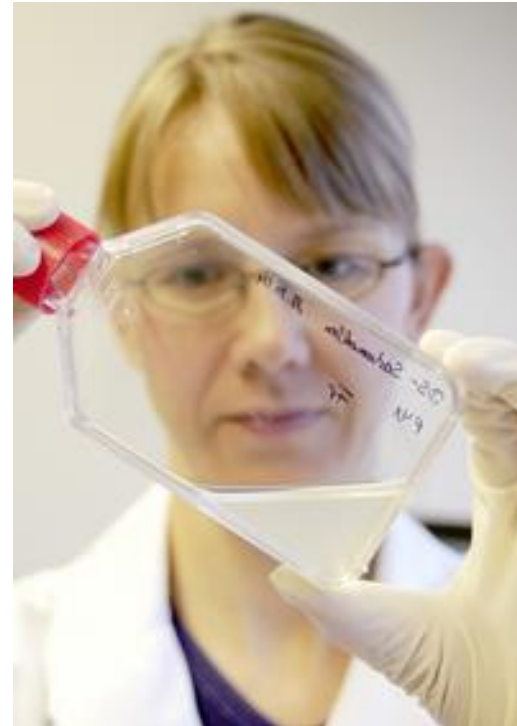
## Content

Partner universities

Erasmus

- General information
- Scholarship
- Application
- Required documents
- Procedure after application
- Application at the host university

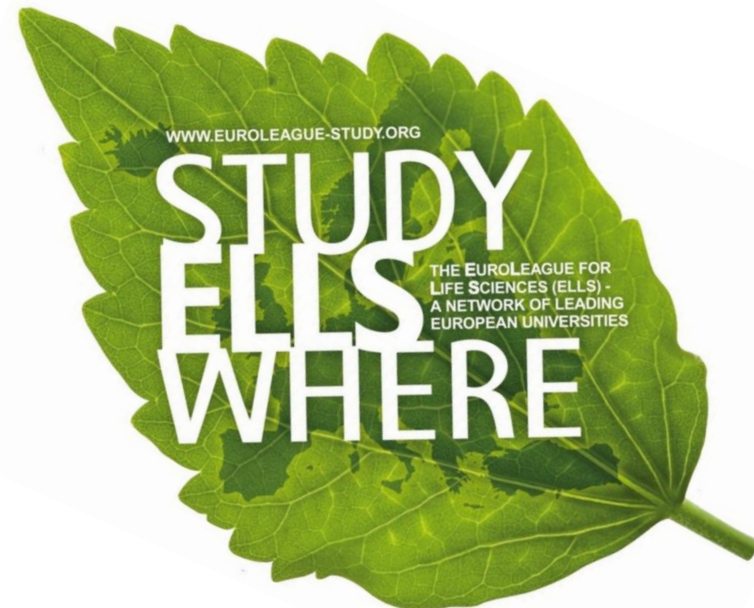
Alternatives



## Euroleague for Life Sciences

SIFC has been established as joint programme within the **Euroleague for Life Sciences**, a quality network of European universities collaborating in the fields of life sciences.

[www.euroleague-study.org](http://www.euroleague-study.org)



# Partner universities for studying abroad

University of Copenhagen, Faculty of Science (SCIENCE), Denmark



winter semester

**LIMITED PLACES – make sure to indicate a second or third choice without limited places when you apply for Erasmus+**



# Partner universities for studying abroad

Wageningen University and Research Centre (WUR), The Netherlands



**WAGENINGEN UNIVERSITY**  
**WAGENINGENUR**

winter OR summer semester

**LIMITED PLACES – make sure to indicate a second or third choice without limited places when you apply for Erasmus+**

Non-EU/EEA citizens have to pay an administrative fee for the visa!

# Partner universities for studying abroad

University of Hohenheim (UHOH), Germany



UNIVERSITÄT HOHENHEIM



**summer semester**

**no limitations**



# Partner universities for studying abroad

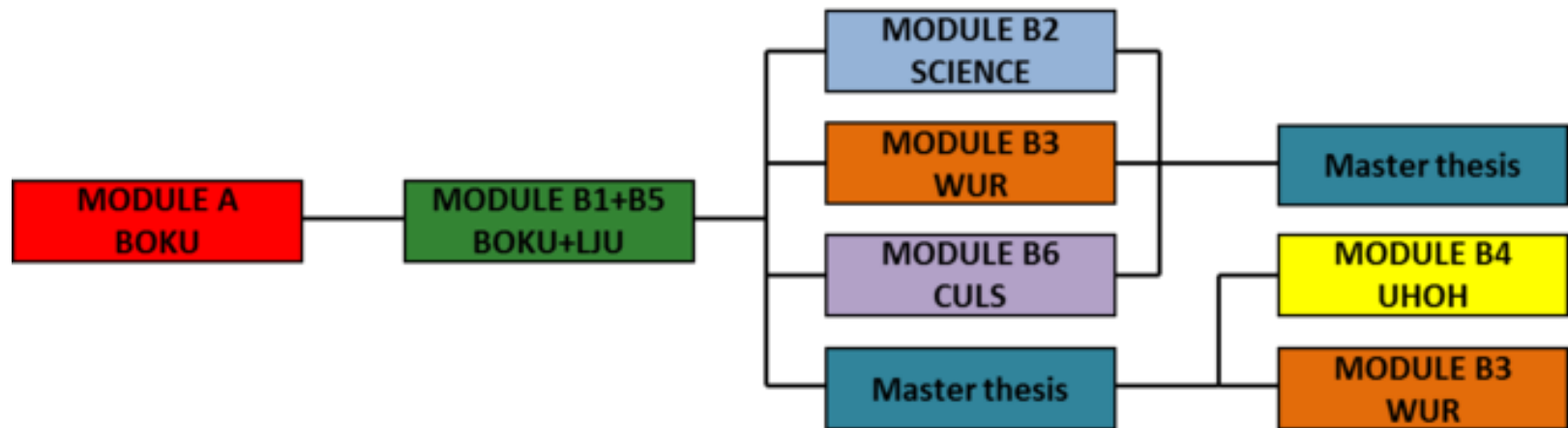
[Czech University of Life Sciences Prague \(CULS\)](#)



**winter semester**

**no limitations**

# Structure





## **ERASMUS +**

- **several stays possible**
- **max. 12 months abroad per study cycle** (BSc, MSc, PhD) for **study exchange + traineeship** (different combinations possible)
  - study exchange October -> September;
  - study exchange SS + WS -> 2 independent stays -> 2 applications -> 2 deadlines (summer not funded)
- **Information: [www.boku.ac.at/int-out-e.html](http://www.boku.ac.at/int-out-e.html)**

## Scholarship

During ERASMUS NO TUITION FEES, neither at BOKU nor at the partner university – only student union fee

Only an **additional allowance (not a full grant)**

- Denmark: € 350,-\*
- Germany: € 300,-\*
- Netherlands: € 300,-\*
- Czech Republic: € 300,-\*

[Euro per month, special rules for students getting „Studienbeihilfe“]

\* Amounts of study year 2017/18

## **Application**

**Online: Mobility Online**

**ERASMUS+ / How to Apply**

<http://www.boku.ac.at/int-out-e-howtoapply-en.html>

**(Use your BOKUonline login)**

**13. Dec. 2017 - 22. Jan 2018**

**for the upcoming academic year**

**(places still available for SS 2019: 24.4.-22.5.2018)**

**Only complete applications will be considered**



## Required Steps

1. Go to the [portal](#): Select
  - ERASMUS SMS as exchange programme,
  - change the study level to master
  - choose your study field
2. Choose one of the four host universities: click on the green LED lamp
3. Login with your BOKUonline-login
4. Enter your data (e.g. university + motivation)

## **Required Steps**

6. Receive a registration e-mail (+ individual login link)
7. Upload documents
8. Confirm dates = submit application
9. Receive e-Mail that application has arrived

**50 Euro Storno if you cancel**

## Documents to upload 1

- Passphoto (jpg oder png, max. 500kb)
- **Motivation letter** (1pdf, draft see website [How to apply](#))
  - 1 paragraph per university What are you studying? What are your special interests? Why did you choose this host university (core competences)? What do you expect from your Erasmus exchange?
- **Transcript of Records** (1 pdf, including grade point average)
  - > **If you do not have 20-30 ECTS yet, please upload what you have + BSC transcript of records. State that you are a first year SIFC student and that you will upload an updated ToR (min. 20 ECTS) in February/March.**
  - > **You will only get a scholarship, if your grade point average of SIFC courses will be below 3.0**



## Documents to upload 2

- **Language certificate**

English at level B2 (= BOKU requirement!!!)

- TOEFL, IELTS, Cambridge Certificate,
- University certificate indicating level B2,
- BOKU language course (min. Engl.III),
- school leaving certificate (max. 5 years old),
- lectures given in Engl.(min.30 ECTS),
- BOKU language certification...

### Special requirements for the application at WUR:

EU/EEA citizens: BOKU language course or certification OR TOEFL 80, IELTS 6.0, Cambridge Certificate

Non-EU/EEA applicants that need a visa: TOEFL 80, IELTS 6.0, Cambridge Certificate [– see the website](#)

**application by January**

**nomination  
(by March)**

**-> information session (German and English)  
in March 2018**

**nominated students acquire  
information on host universities**

deadlines, forms ,  
Learning Agreement, language course, etc.  
**-> application at host university**

**Further steps:**

- Mobility Online (e.g. Learning Agreement)**
- Students Online (Erasmus agreement)**

## Info on host universities

- Application form
- Application deadline
- Courses offered
- Learning Agreement
- Schedules/time tables
- Accommodation





## **ERASMUS+ - Contact**

**Information:**

**<http://www.boku.ac.at/int-out-e-en.html>**

**Lisa Kargl**

**[erasmusfromboku@boku.ac.at](mailto:erasmusfromboku@boku.ac.at)**

**student inquiry:**

**Mo-Fri: 10:00 – 12:00**

**+ Wed 14:00 – 16:00**

**Exceptions see: <http://www.boku.ac.at/lisakargl.html>**



## Other grants

**For Austrian citizens only:**

**Studienbeihilfe, Selbsterhalterstipendium -> Auslandsbeihilfe**

<https://www.stipendium.at/studienfoerderung/beihilfe-ausland/auslandsbeihilfe/>  
(+ Reisekostenzuschuss)

Grants of the **Austrian Provinces** (requirement: Hauptwohnsitz/main residence)

Oberösterreich, Steiermark, Tirol, Vorarlberg

-> check website of the provincial government

Grants of **different countries:**

- E.g. Spain, Italy,...

[www.grants.at](http://www.grants.at)

## **Master's Thesis: Erasmus Traineeship**

- **Scholarship for an internship (your master's thesis)**
- **Additional allowance – not a full grant (approx € 400)**
- **2-12 months**
- **Application documents and further information: [www.boku.ac.at/int-out-ep.html](http://www.boku.ac.at/int-out-ep.html)**
- **Application with all documents at least 2 months before leaving**
- **Contact person Gudrun Reisinger  
([gudrun.reisinger@boku.ac.at](mailto:gudrun.reisinger@boku.ac.at))**

## **Alternatives – only if you already used 12 months of ERASMUS(+) at master level**

- **Remission of tuition fees** at home and at host university during study abroad period within SIFC
  - > apply for Erasmus (mark in the application form that you have done ERASMUS before)
- **KUWI** – grant for master's thesis abroad

## **KUWI**

- **Scholarship for your master's thesis**
- **Additional allowance – not a full grant:**  
173-572 €/ month + travel grant (1x)
- **max. 4 months funded**
- **4 submission deadlines/year:**  
January, March, May, November



## **KUWI**

**Information:** criteria, application procedure, forms,...

**<http://www.boku.ac.at/int-out-kuwi.html>**

**Selis Schmidt**

**[selis.schmidt@boku.ac.at](mailto:selis.schmidt@boku.ac.at)**

**student inquiry:**

**Mon, Tue, Wed 10:00 – 12:00**

## **General administrative questions about SIFC:**

**<http://www.boku.ac.at/int-master-ells-sifc.html>**

**Ulrike Piringer**

**[ulrike.piringer@boku.ac.at](mailto:ulrike.piringer@boku.ac.at)**

**student inquiry:**

**Mo-Fri: 10:00 – 12:00 + Wed 14:00 – 16:00**

**Exceptions see: <http://www.boku.ac.at/piringerulrike.html>**

## Information

**Zentrum für Internationale Beziehungen (ZIB)  
Center for International Relations**

**<http://www.boku.ac.at/zib.html>**

**Peter Jordan-Straße 82a**

**1190 Wien**

**Tel.: 047654 2600**

**[zib@boku.ac.at](mailto:zib@boku.ac.at)**



**THANK YOU FOR YOUR ATTENTION**  
**Success with your study!**

